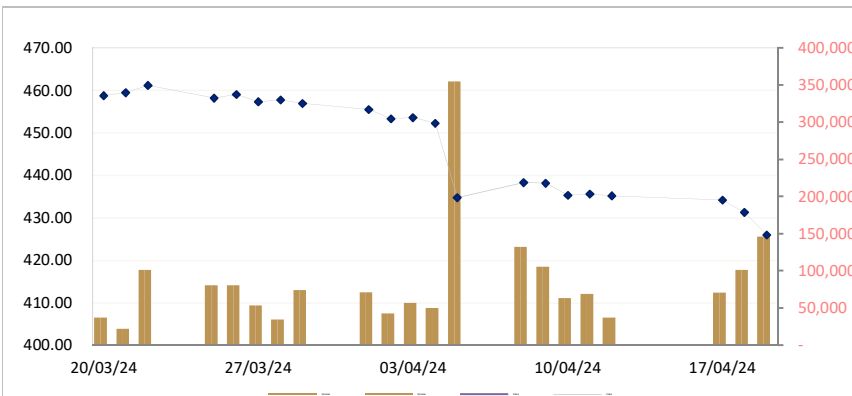


**CAMBODIA SECURITIES EXCHANGE: MARKET SUMMARY**

|        |        |        |       |       |        |        |         |               |
|--------|--------|--------|-------|-------|--------|--------|---------|---------------|
| 431.28 | 430.97 | 425.93 | -5.35 | ▼1.24 | 853    | 305    | 146,097 | 1,096,709,360 |
| 7,120  | 7,180  | 7,160  | 40.   | ▲0.56 | 8,100  | 6,180  | 2,943   | 20,825,100    |
| 2,350  | 2,340  | 2,330  | -20.  | ▼0.85 | 4,500  | 2,150  | 717     | 1,653,340     |
| 12,520 | 12,520 | 12,500 | -20.  | ▼0.16 | 16,400 | 12,300 | 17      | 211,560       |
| 2,070  | 2,080  | 2,060  | -10.  | ▼0.48 | 2,590  | 1,980  | 1,149   | 2,349,480     |
| 12,140 | 12,140 | 12,300 | 160.  | ▲1.32 | 14,780 | 11,880 | 308     | 3,382,300     |
| 8,520  | 8,500  | 8,300  | -220. | ▼2.58 | 15,200 | 8,120  | 124,259 | 1,030,998,320 |
| 2,380  | 2,370  | 2,360  | -20.  | ▼0.84 | 3,400  | 2,190  | 139     | 3,382,300     |

**CSX DAILY STOCK INDEX (Last 30 Days)**



**Listed Companies**

|          |                                   |
|----------|-----------------------------------|
| PPWSA    | Phnom Penh Water Supply Authority |
| Industry | Water Utility                     |
| GTI      | Grant Twins Int. (Cambodia) Plc.  |
| Industry | Apparel Clothing                  |
| PPAP     | Phnom Penh Autonomous Port.       |
| Industry | Port Services                     |
| PPSP     | Phnom Penh SEZ PLC.               |
| Industry | SEZ Developer                     |
| PAS      | Sihanouk Ville Autonomous Port.   |
| Industry | Port Services                     |
| ABC      | ACLEDA Bank                       |
| Industry | Financial                         |
| PEPC     | PESTECH Cambodia                  |
| Industry | Electricity                       |

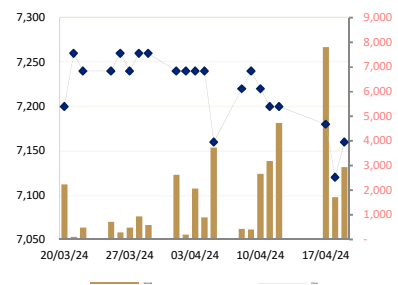
**Securities News**

**Business & Economic News**

**CAMBODIA: Rice exports earn \$123 million in Q1**

Cambodia exported 166,451 tons of milled rice in the first quarter (Q1) of 2024, down 5.7 % from 176,581 tons in the same period last year, a report from the Cambodia Rice Federation (CRF) showed. The Kingdom made \$123.6 million in revenue from the export of the commodity during the January-March period this year, down 1.9 % from \$126 million recorded in the same period last year, the report said. Exported milled rice varieties included fragrant rice, fragrant rice, long grain white rice, parboiled rice, and organic rice, it said, citing that fragrant rice accounted for 81 percent of total rice export. 46 rice exporters to 56 countries and regions, read the report, exported the commodity. China and Europe are the major markets for Cambodia’s milled rice. China remained the top buyer of Cambodia’s milled rice, purchasing 43,039 tones or 25.8 % of Cambodia’s total milled rice export in the first quarter, the report said. The Kingdom exported rice to 25 countries in the European bloc at an amount of 78,675 tons, 6 countries in the ASEAN bloc 29,719 tons and other destinations 15,018 tons, stated the report. The amount of commodity exports is equal to the amount in the same period of last year, said CRF secretary-general Lun Yeng. “The amount of milled rice export is comparatively the same as the amount exported in the same period last year because some segments have not yet been included,” Yeng said. In addition, Cambodia generated some \$600 million in revenue from border-traded paddy rice of some 2.22 million tons during the 3 months. In 2023, the Kingdom exported more than 656,000 tons of milled rice worth \$466

**PPWSA Daily Stock Price**



million, marking a 3 % growth in volume and 13 % in value compared with 2022. CRF has set an ambitious goal to export at least a million tons of milled rice by 2025.

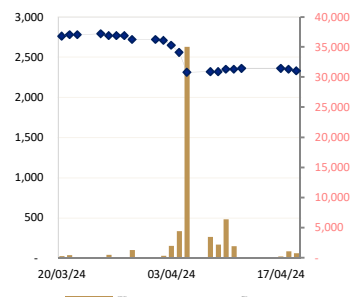
**CAMBODIA: Cambodia ranks first in ASEAN and third among the 20 fastest growing economies in Asia with a growth rate of 6.1% in 2024**

The Kingdom of Cambodia ranked first in ASEAN and third among the 20 fastest growing economies in Asia with a growth rate of 6.1% in 2024. According to Pen Bona, spokesperson of the Royal Government of Cambodia, the ranking of economic growth published by the Indonesian statistics firm SeasiaStats based on the forecasts of international financial institutions. The spokesperson recalled that under the leadership of Mr Hun Sen, the former Prime Minister, Cambodia had a high and steady economic growth of around 7% for decades. This enabled Cambodia to realize rapid development after achieving full peace with a win-win policy in 1998, stressed the spokesperson. Pen Bona continued to say that the Covid-19 epidemic has come in and dragged down the entire world economy in a way no one could have imagined. Despite the global upheaval caused by the Covid-19 pandemic, Cambodia, under the astute leadership of the Royal Government, led by Mr Hun Sen, has demonstrated remarkable resilience. The government's prudent management has mitigated the impact of this unprecedented health crisis, gradually steering the country and its people towards recovery. Undeterred by the global economic challenges posed by the Covid-19 crisis and the war in Ukraine, the Royal Government, led by Prime Minister of Cambodia, Mr Hun Manet, has unveiled a comprehensive vision. This ambitious pentagon strategy aimed at propelling Cambodia to high-income status by 2050, a testament to the government's unwavering commitment to the country's economic growth. Pen Bona stressed that to achieve the goal, six priority policy programs have been put in place to be implemented immediately, all of which help improve the lives of people, especially the poor and vulnerable. Cambodian National Radio

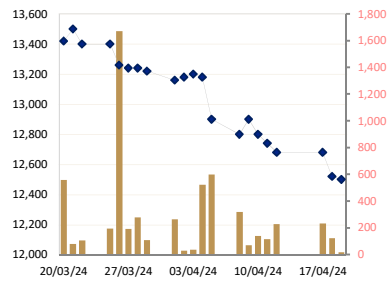
**CAMBODIA: Cambodia's exports surge 18% in Q1**

Showing signs of a clear recovery, Cambodia's exports reached \$6.26 billion in the first quarter (Q1) of the year, a surge of 18 % compared to the same period last year, according to the trade data released by the General Department of Customs and Excise (GDCE) yesterday. Cambodia's imports too went up, reaching \$6.23 billion during the January to March period this year, an increase of 6.4 %, compared to the same period last year. The Kingdom's international trade (exports and imports together) reached \$12.49 billion in Q1, 2024, recording a growth of 11.9 %, year-on-year. While China continued to be the biggest trading partner of the country in the January to March period of 2024, the US remained its biggest export destination. Trade with China recorded a growth of 12.2 %, compared to the first three months in 2023, and reached \$3.21 billion. Vietnam is the second biggest trading partner of Cambodia and its second biggest export destination now. The Kingdom's trade with the neighboring country recorded a growth of 24.5 % to reach \$2.32 billion. Trade with the US, the third biggest trading partner, registered a growth of 8.6 % during the same period and reached \$2.04 billion, the data revealed. It also showed that exports from Cambodia to the US reached \$1.98 billion in Q1 this year, rising by 8.9 %, compared to the same period last year. Exports to Vietnam grew to \$1.39 billion, registering an impressive growth of 53 %. While the US has a share of 31.7 % of Cambodia's exports, Vietnam, which is in the second position, claims a share of 22.2 %. China, which is in the third position, accounted for \$366 million worth of exports from Cambodia, a rise of 11.4 %, but it accounts for only 5.8 % of the export market of the Kingdom. Japan is now the fourth biggest export destination of Cambodia, also accounting for 5.8 % of the market. The exports to Japan rose by 18.4 % in the first three months this year, compared to the same period last year and reached \$365 million. While Cambodia imported \$2.84 billion worth of goods from China, it imported \$933 million worth of goods from Vietnam and just \$57 million worth of goods from the US. Thus, Cambodia has a \$2.47 billion trade deficit with China but a surplus of \$1.92 billion in trade with the US in the Q1 period of January to March 2024. The Kingdom also registered a surplus of \$458 million in trade with Vietnam. The country has a trade deficit of \$551 million with Thailand but recorded a surplus of \$223 million with Japan. It may be note that in 2023, Cambodia's international trade declined 1.9 % compared to 2022.

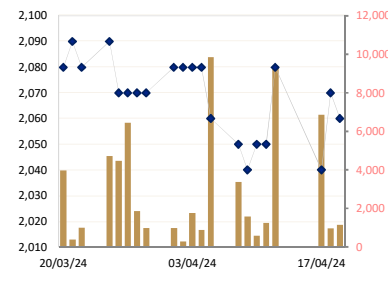
GTI Daily Stock Price



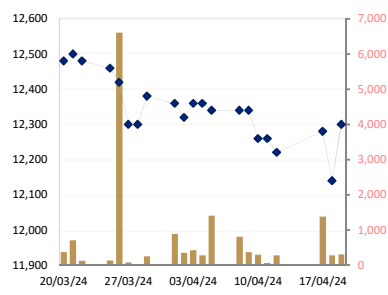
PPAP Daily Stock Price



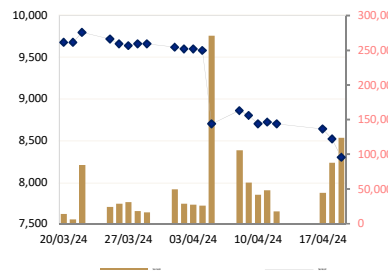
PPSP Daily Stock Price



PAS Daily Stock Price



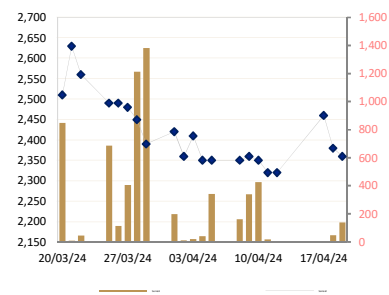
ABC Daily Stock Price



**CAMBODIA: Cashew nut processing competition pioneered to bolster local industry**

Under a fresh initiative supported by the Department of Agro-Industry, a subsidiary of the Ministry of Agriculture, Forestry and Fisheries (MAFF), cashew farmers and processors nationwide will compete to win the top spot for local cashew nut production quality and capacity. The competition seeks to improve and promote local agro-industry entrepreneurs and their final products, falling in line with the government’s long-term policy to add value to the fledgling cashew nut sector. The one-month competition, starting on May 6, seeks to identify the best-processed cashew nuts in Cambodia, demonstrating both a high quality of final product and technical safety throughout the enterprise’s production cycle. Following the judging process, the top three enterprises will be chosen by a committee from the Department of Agro-industry and awarded prizes, along with other opportunities. The initiative, according to MAFF, should encourage more processing enterprises focused on the cashew nut sector and encourage competitiveness between current suppliers within the local industry. According to the ministry, the cashew nut production and export sector faces ongoing challenges including limited price competition between suppliers, adherence to safety requirements and quality standard management, all of which the competition seeks to highlight and improve amid the private sector. Enterprises looking to join the competition may submit their application to the Department of Agro-industry starting from May 6; the committee is then responsible for reviewing the preliminary applications for the next stage of judging. Following the enterprise’s application acceptance, those selected will go to the assessment and evaluation stage. The initial judging will take place in Siem Reap province, including a first assessment of entrants, which entails a half-hour presentation detailing the venture’s process and results, followed by a question-and-answer session with the judging panel. During the investigation, there will also be an onsite inspection of farms and processing facilities by the judges. The criteria being assess in the competition include the management team and structure, infrastructure for the operations, raw cashew nut supplier linkage and control, processing handling standards and hygiene, packaging and labelling, market access and strategy, economic analysis and women’s encouragement and livelihood improvement. The final judging will then commence on May 24 in the capital city, Phnom Penh. Following another half-hour presentation by each enterprise reaching the final stage, along with the comprehensive findings by the judging panel throughout the month on each enterprise’s detailed operations, first, second and third places will then be decided and awarded to entrants.

PEPC Daily Stock Price



## Historical Data from 29/ March /24 to 19/ April / 24

| Date     | Index/Stock | Open   | High   | Low    | Close  | Change  | Δ (%)  | Volume    | Value (mil. KHR) | Value (\$)* | Mar. Cap. (mil. KHR) |
|----------|-------------|--------|--------|--------|--------|---------|--------|-----------|------------------|-------------|----------------------|
| 19/04/24 | Index       | 430.97 | 431.16 | 421.68 | 425.93 | 5.35    | ▲1.24% | 129,532   | 1,060,098,140    | 265,025     | 5,949,663            |
|          | PPWSA       | 7,180  | 7,180  | 7,000  | 7,160  | 40.00   | ▲0.56% | 2,943     | 20,825,100       | 5,206.28    | 622,728              |
|          | GTI         | 2,340  | 2,340  | 2,300  | 2,330  | -20.00  | ▼0.85% | 717       | 1,653,340        | 413.34      | 93,200               |
|          | PPAP        | 12,520 | 12,520 | 12,360 | 12,500 | -20.00  | ▼0.15% | 17        | 211,560          | 52.89       | 258,555              |
|          | PPSP        | 2,080  | 2,080  | 2,020  | 2,060  | -10.00  | ▼0.48% | 1,149     | 2,349,480        | 587.37      | 148,063              |
|          | PAS         | 12,140 | 12,300 | 12,140 | 12,300 | 160.00  | ▲1.31% | 308       | 3,739,280        | 934.82      | 1,054,995            |
|          | ABC         | 8,500  | 8,500  | 8,120  | 8,300  | -220.00 | ▼2.58% | 124,259   | 1,030,998,320    | 257,749.58  | 3,595,253            |
| PEPC     | 2,370       | 2,370  | 2,300  | 2,360  | -20.00 | ▼0.84%  | 139    | 321,060   | 80.27            | 176,870     |                      |
| 18/04/24 | Index       | 433.82 | 433.93 | 428.88 | 431.28 | 2.86    | ▲0.66% | 92,065    | 773,484,240      | 193,371     | 6,031,188            |
|          | PPWSA       | 7,180  | 7,200  | 7,100  | 7,120  | -60.00  | ▼0.83% | 1,718     | 12,273,240       | 3,068.31    | 619,249              |
|          | GTI         | 2,360  | 2,360  | 2,300  | 2,350  | -10.00  | ▼0.42% | 1,094     | 2,523,120        | 630.78      | 94,000               |
|          | PPAP        | 12,680 | 12,680 | 12,520 | 12,520 | -160.00 | ▼1.26% | 123       | 1,540,760        | 385.19      | 258,968              |
|          | PPSP        | 2,040  | 2,080  | 2,020  | 2,070  | 30.00   | ▲1.47% | 957       | 1,972,570        | 493.14      | 148,781              |
|          | PAS         | 12,280 | 12,280 | 12,120 | 12,140 | -140.00 | ▼1.14% | 278       | 3,382,300        | 845.58      | 1,041,272            |
|          | ABC         | 8,620  | 8,640  | 8,500  | 8,520  | -120.00 | ▼1.38% | 87,847    | 751,679,500      | 187,919.88  | 3,690,549            |
| PEPC     | 2,300       | 2,380  | 2,300  | 2,380  | -80.00 | ▼3.25%  | 48     | 112,750   | 28.19            | 178,369     |                      |
| 17/04/24 | Index       | 434.87 | 435.19 | 432.07 | 434.14 | 1.05    | ▲0.24% | 61,264    | 476,988,680      | 119,247     | 6,107,943            |
|          | PPWSA       | 7,200  | 7,200  | 7,100  | 7,180  | -20.00  | ▼0.27% | 7,802     | 55,593,920       | 13,898.48   | 624,467              |
|          | GTI         | 2,360  | 2,360  | 2,340  | 2,360  | 0.00    | 0.00%  | 247       | 580,730          | 145.18      | 94,400               |
|          | PPAP        | 12,320 | 12,680 | 12,320 | 12,680 | 0.00    | 0.00%  | 234       | 2,927,760        | 731.94      | 262,278              |
|          | PPSP        | 2,080  | 2,080  | 2,020  | 2,040  | -40.00  | ▼1.92% | 6,860     | 13,942,460       | 3,485.62    | 146,625              |
|          | PAS         | 12,320 | 12,320 | 12,120 | 12,280 | 60.00   | ▲0.49% | 1,379     | 16,939,940       | 4,234.99    | 1,053,280            |
|          | ABC         | 8,680  | 8,700  | 8,600  | 8,640  | -60.00  | ▼0.68% | 44,740    | 386,999,120      | 96,749.78   | 3,742,528            |
| PEPC     | 2,290       | 2,460  | 2,290  | 2,460  | 140.00 | ▲6.03%  | 2      | 4,750     | 1.19             | 184,365     |                      |
| 12/04/24 | Index       | 434.21 | 436.15 | 433.88 | 435.19 | 0.40    | ▲0.09% | 32,543    | 216,112,760      | 54,028      | 6,122,909            |
|          | PPWSA       | 7,180  | 7,200  | 7,160  | 7,200  | 0.00    | 0.00%  | 4,727     | 34,006,360       | 8,501.59    | 626,207              |
|          | GTI         | 2,350  | 2,360  | 2,310  | 2,360  | 10.00   | ▲0.42% | 48        | 112,710          | 28.18       | 94,400               |
|          | PPAP        | 12,780 | 12,780 | 12,600 | 12,680 | -60.00  | ▼0.47% | 227       | 2,877,020        | 719.26      | 262,278              |
|          | PPSP        | 2,060  | 2,080  | 2,050  | 2,080  | 30.00   | ▲1.46% | 9,298     | 19,073,590       | 4,768.40    | 149,500              |
|          | PAS         | 12,220 | 12,260 | 12,220 | 12,220 | -40.00  | ▼0.32% | 281       | 3,438,320        | 859.58      | 1,048,133            |
|          | ABC         | 8,780  | 8,780  | 8,700  | 8,700  | -20.00  | ▼0.22% | 17,962    | 156,604,760      | 39,151.19   | 3,768,518            |
| PEPC     | 0           | 2,320  | 2,320  | 2,320  | 0.00   | 0.00%   | 0      | 0         | 0.00             | 173,872     |                      |
| 11/04/24 | Index       | 436.17 | 436.17 | 433.15 | 435.59 | 0.25    | ▲0.06% | 54,788    | 451,441,650      | 112,860     | 6,133,688            |
|          | PPWSA       | 7,180  | 7,200  | 7,180  | 7,200  | -20.00  | ▼0.27% | 3,191     | 22,935,520       | 5,733.88    | 626,207              |
|          | GTI         | 2,350  | 2,350  | 2,350  | 2,350  | 0.00    | 0.00%  | 1,928     | 4,530,800        | 1,132.70    | 94,000               |
|          | PPAP        | 12,520 | 12,740 | 12,520 | 12,740 | -60.00  | ▼0.46% | 114       | 1,429,820        | 357.46      | 263,519              |
|          | PPSP        | 2,050  | 2,070  | 2,040  | 2,050  | 0.00    | 0.00%  | 1,261     | 2,585,390        | 646.35      | 147,344              |
|          | PAS         | 12,340 | 12,340 | 12,260 | 12,260 | 0.00    | 0.00%  | 59        | 725,500          | 181.38      | 1,051,564            |
|          | ABC         | 8,700  | 8,800  | 8,660  | 8,720  | 20.00   | ▲0.22% | 48,216    | 419,190,000      | 104,797.50  | 3,777,182            |
| PEPC     | 2,370       | 2,370  | 2,320  | 2,320  | -30.00 | ▼1.27%  | 19     | 44,620    | 11.16            | 173,872     |                      |
| 10/04/24 | Index       | 438.03 | 438.03 | 432.11 | 435.34 | 2.82    | ▲0.64% | 51,936    | 404,367,420      | 101,092     | 6,130,253            |
|          | PPWSA       | 7,200  | 7,240  | 7,200  | 7,220  | -20.00  | ▼0.27% | 2,655     | 19,131,560       | 4,782.89    | 627,946              |
|          | GTI         | 2,320  | 2,350  | 2,300  | 2,350  | 30.00   | ▲1.29% | 6,376     | 14,913,910       | 3,728.48    | 94,000               |
|          | PPAP        | 12,900 | 12,900 | 12,700 | 12,800 | -100.00 | ▼0.77% | 139       | 1,772,200        | 443.05      | 264,760              |
|          | PPSP        | 2,060  | 2,060  | 2,040  | 2,050  | 10.00   | ▲0.49% | 579       | 1,187,590        | 296.90      | 147,344              |
|          | PAS         | 12,340 | 12,340 | 12,120 | 12,260 | -80.00  | ▼0.64% | 298       | 3,653,280        | 913.32      | 1,051,564            |
|          | ABC         | 8,800  | 8,820  | 8,700  | 8,700  | -100.00 | ▼1.13% | 41,463    | 362,696,040      | 90,674.01   | 3,768,518            |
| PEPC     | 2,190       | 2,450  | 2,190  | 2,350  | -10.00 | ▼0.42%  | 426    | 1,012,840 | 253.21           | 176,121     |                      |
| 09/04/24 | Index       | 438.52 | 441.46 | 436.93 | 438.16 | 0.10    | ▲0.02% | 64,150    | 542,286,620      | 135,572     | 6,183,070            |
|          | PPWSA       | 7,240  | 7,240  | 7,220  | 7,240  | 20.00   | ▲0.27% | 405       | 2,931,880        | 732.97      | 629,686              |
|          | GTI         | 2,320  | 2,320  | 2,310  | 2,320  | 0.00    | 0.00%  | 2,152     | 4,991,780        | 1,247.95    | 92,800               |
|          | PPAP        | 12,800 | 12,920 | 12,800 | 12,900 | 100.00  | ▲0.78% | 70        | 901,280          | 225.32      | 266,828              |
|          | PPSP        | 2,050  | 2,060  | 2,040  | 2,040  | -10.00  | ▼0.48% | 1,576     | 3,229,310        | 807.33      | 146,625              |
|          | PAS         | 12,340 | 12,360 | 12,300 | 12,340 | 0.00    | 0.00%  | 362       | 4,462,440        | 1,115.61    | 1,058,426            |
|          | ABC         | 8,900  | 8,980  | 8,780  | 8,800  | -60.00  | ▼0.67% | 59,244    | 524,967,780      | 131,241.95  | 3,811,835            |
| PEPC     | 2,350       | 2,390  | 2,340  | 2,360  | 10.00  | ▲0.42%  | 341    | 802,150   | 200.54           | 176,870     |                      |
| 08/04/24 | Index       | 434.37 | 439.38 | 431.38 | 438.26 | 3.54    | ▲0.81% | 114,191   | 957,314,010      | 239,329     | 6,205,221            |
|          | PPWSA       | 7,160  | 7,220  | 7,140  | 7,220  | 60.00   | ▲0.83% | 420       | 3,023,060        | 755.77      | 627,946              |
|          | GTI         | 2,310  | 2,320  | 2,150  | 2,320  | 10.00   | ▲0.43% | 3,422     | 7,889,350        | 1,972.34    | 92,800               |

|          |       |        |        |        |        |         |        |         |               |            |           |
|----------|-------|--------|--------|--------|--------|---------|--------|---------|---------------|------------|-----------|
|          | PPAP  | 12,900 | 12,900 | 12,600 | 12,800 | -100.00 | ▼0.77% | 319     | 4,043,180     | 1,010.80   | 264,760   |
|          | PPSP  | 2,050  | 2,070  | 2,010  | 2,050  | -10.00  | ▼0.48% | 3,379   | 6,924,220     | 1,731.06   | 147,344   |
|          | PAS   | 12,200 | 12,340 | 12,060 | 12,340 | 0.00    | 0.00%  | 812     | 9,959,140     | 2,489.79   | 1,058,426 |
|          | ABC   | 8,740  | 12,700 | 8,640  | 8,860  | 160.00  | ▲1.83% | 105,676 | 925,094,220   | 231,273.56 | 3,837,824 |
|          | PEPC  | 2,250  | 2,350  | 2,250  | 2,350  | 0.00    | 0.00%  | 163     | 380,840       | 95.21      | 176,121   |
|          | Index | 440.23 | 446.39 | 432.09 | 434.72 | 17.49   | ▲3.87% | 322,069 | 2,575,282,790 | 643,821    | 6,133,084 |
| 05/04/24 | PPWSA | 7,220  | 7,240  | 7,000  | 7,160  | -80.00  | ▼1.10% | 3,718   | 26,513,680    | 6,628.42   | 622,728   |
|          | GTI   | 2,510  | 2,510  | 2,310  | 2,310  | -250.00 | ▼9.76% | 35,030  | 81,858,350    | 20,464.59  | 92,400    |
|          | PPAP  | 13,180 | 13,180 | 12,300 | 12,900 | -280.00 | ▼2.12% | 598     | 7,515,120     | 1,878.78   | 266,828   |
|          | PPSP  | 2,050  | 2,080  | 2,000  | 2,060  | -20.00  | ▼0.96% | 9,864   | 19,893,960    | 4,973.49   | 148,063   |
|          | PAS   | 12,360 | 12,360 | 12,200 | 12,340 | -20.00  | ▼0.16% | 1,409   | 17,298,440    | 4,324.61   | 1,058,426 |
|          | ABC   | 9,000  | 9,280  | 8,660  | 8,700  | -880.00 | ▼9.18% | 271,108 | 2,421,401,120 | 605,350.28 | 3,768,518 |
|          | PEPC  | 2,350  | 2,350  | 2,340  | 2,350  | 0.00    | 0.00%  | 342     | 802,120       | 200.53     | 176,121   |
|          | Index | 453.67 | 454.47 | 451.55 | 452.21 | 1.37    | ▲0.30% | 33,091  | 279,581,090   | 69,895     | 6,552,178 |
| 04/04/24 | PPWSA | 7,200  | 7,240  | 7,200  | 7,240  | 0.00    | 0.00%  | 896     | 6,469,980     | 1,617.50   | 629,686   |
|          | GTI   | 2,600  | 2,600  | 2,550  | 2,560  | -90.00  | ▼3.39% | 4,426   | 11,449,100    | 2,862.28   | 102,400   |
|          | PPAP  | 13,200 | 13,320 | 13,000 | 13,180 | -20.00  | ▼0.15% | 522     | 6,798,360     | 1,699.59   | 272,620   |
|          | PPSP  | 2,080  | 2,080  | 2,060  | 2,080  | 0.00    | 0.00%  | 888     | 1,842,950     | 460.74     | 149,500   |
|          | PAS   | 12,360 | 12,380 | 12,240 | 12,500 | 0.00    | 0.00%  | 277     | 3,405,760     | 851.44     | 1,072,150 |
|          | ABC   | 9,600  | 9,620  | 9,560  | 9,580  | -20.00  | ▼0.20% | 26,042  | 249,519,580   | 62,379.90  | 4,149,702 |
|          | PEPC  | 2,470  | 2,470  | 2,350  | 2,350  | -60.00  | ▼2.48% | 40      | 95,360        | 23.84      | 176,121   |
|          | Index | 453.17 | 455.46 | 452.76 | 453.58 | 0.32    | ▲0.07% | 33,488  | 290,762,490   | 72,691     | 6,557,343 |
| 03/04/24 | PPWSA | 7,240  | 7,240  | 7,220  | 7,240  | 0.00    | 0.00%  | 2,060   | 14,876,820    | 3,719.21   | 629,686   |
|          | GTI   | 2,640  | 2,650  | 2,560  | 2,650  | -60.00  | ▼2.21% | 1,969   | 5,190,750     | 1,297.69   | 106,000   |
|          | PPAP  | 13,200 | 13,200 | 13,040 | 13,200 | 20.00   | ▲0.15% | 36      | 474,400       | 118.60     | 273,034   |
|          | PPSP  | 2,080  | 2,080  | 2,050  | 2,080  | 0.00    | 0.46%  | 1,773   | 3,654,170     | 913.54     | 149,500   |
|          | PAS   | 12,320 | 12,380 | 12,200 | 12,360 | 40.00   | ▲0.32% | 420     | 5,183,620     | 1,295.91   | 1,060,142 |
|          | ABC   | 9,600  | 9,620  | 9,580  | 9,600  | 0.00    | 0.00%  | 27,210  | 261,334,380   | 65,333.60  | 4,158,365 |
|          | PEPC  | 2,470  | 2,470  | 2,410  | 2,410  | 50.00   | ▲2.11% | 20      | 48,350        | 12.09      | 180,617   |
|          | Index | 452.15 | 454.91 | 451.83 | 453.26 | 2.20    | ▲0.48% | 29,812  | 282,032,750   | 70,508     | 6,552,151 |
| 02/04/24 | PPWSA | 7,240  | 7,240  | 7,220  | 7,240  | 0.00    | 0.00%  | 197     | 1,424,100     | 356.03     | 629,686   |
|          | GTI   | 2,700  | 2,710  | 2,670  | 2,710  | -10.00  | ▼0.36% | 343     | 927,610       | 231.90     | 108,400   |
|          | PPAP  | 13,200 | 13,200 | 13,060 | 13,180 | 20.00   | ▲0.15% | 29      | 381,800       | 95.45      | 272,620   |
|          | PPSP  | 2,080  | 2,080  | 2,060  | 2,080  | 0.00    | 0.00%  | 285     | 590,480       | 147.62     | 149,500   |
|          | PAS   | 12,120 | 12,320 | 12,120 | 12,320 | -40.00  | ▼0.32% | 350     | 4,264,840     | 1,066.21   | 1,056,711 |
|          | ABC   | 9,600  | 9,620  | 9,580  | 9,600  | -20.00  | ▼0.20% | 28,598  | 274,420,320   | 68,605.08  | 4,158,365 |
|          | PEPC  | 2,360  | 2,360  | 2,360  | 2,360  | -60.00  | ▼2.47% | 10      | 23,600        | 5.90       | 176,870   |
|          | Index | 456.63 | 457.00 | 451.35 | 455.46 | 1.44    | ▲0.32% | 54,319  | 509,530,480   | 127,383    | 6,568,729 |
| 01/04/24 | PPWSA | 7,240  | 7,240  | 7,180  | 7,240  | -20.00  | ▼0.27% | 2,619   | 18,845,780    | 4,711.45   | 629,686   |
|          | GTI   | 2,720  | 2,720  | 2,720  | 2,720  | 0.00    | 0.00%  | 3       | 8,160         | 2.04       | 108,800   |
|          | PPAP  | 12,980 | 13,200 | 12,980 | 13,160 | -60.00  | ▼0.45% | 263     | 3,441,700     | 860.43     | 272,206   |
|          | PPSP  | 2,090  | 2,090  | 2,050  | 2,080  | 10.00   | ▲0.48% | 997     | 2,061,310     | 515.33     | 149,500   |
|          | PAS   | 12,380 | 12,380 | 12,040 | 12,360 | -20.00  | ▼0.16% | 882     | 10,699,420    | 2,674.86   | 1,060,142 |
|          | ABC   | 9,640  | 9,660  | 9,580  | 9,620  | -40.00  | ▼0.41% | 49,356  | 473,989,280   | 118,497.32 | 4,167,028 |
|          | PEPC  | 2,390  | 2,460  | 2,340  | 2,420  | 30.00   | ▲1.25% | 199     | 484,830       | 121.21     | 181,367   |
|          | Index | 457.10 | 458.93 | 455.54 | 456.90 | 0.86    | ▲0.19% | 21,151  | 177,421,090   | 44,355     | 6,587,784 |
| 29/03/24 | PPWSA | 7,260  | 7,260  | 7,200  | 7,260  | 0.00    | 0.00%  | 582     | 4,207,320     | 1,051.83   | 631,425   |
|          | GTI   | 2,740  | 2,760  | 2,500  | 2,720  | -50.00  | ▼1.80% | 1,267   | 3,391,310     | 847.83     | 108,800   |
|          | PPAP  | 13,220 | 13,240 | 13,220 | 13,220 | -20.00  | ▼0.15% | 108     | 1,427,820     | 356.96     | 273,447   |
|          | PPSP  | 2,070  | 2,070  | 2,060  | 2,070  | 0.00    | 0.00%  | 995     | 2,059,250     | 514.81     | 148,781   |
|          | PAS   | 12,400 | 12,400 | 12,380 | 12,380 | 80.00   | ▲0.65% | 252     | 3,121,720     | 780.43     | 1,061,857 |
|          | ABC   | 9,620  | 9,680  | 9,620  | 9,660  | 0.00    | 0.00%  | 16,565  | 159,892,380   | 39,973.10  | 4,184,355 |
|          | PEPC  | 2,420  | 2,450  | 2,390  | 2,390  | -60.00  | ▼2.44% | 1,382   | 3,321,290     | 830.32     | 179,119   |

Source: Data from CSX, and Compiled by ACS \*Exchange Rate: USD1=KHR 4,000

## DISCLAIMER

ALL RESEARCH based on material compiled from data considered reliable at the time of writing. However, information and opinions expressed will be subject to change at short notice, and no part of this report is to be construed as an offer or solicitation of an offer to transact any securities or financial instruments whether referred to herein or otherwise. We do not accept any liability directly or indirectly that may arise from investment decision-making based on this report. The company, its directors, officers, employees and/or connected persons may periodically hold an interest in the securities mentioned.

All Rights Reserved. No part of this publication may be used or re-produced without expressed permission from [ACLEDA SECURITIES PLC.](#)

## ACLEDA IN GROUP

### ACLEDA BANK PLC.

#### HEADQUARTERS

# 61, Preah Monivong Blvd., Sangkat Srah Chork,  
Khan Daun Penh, Phnom Penh, Kingdom of Cambodia.  
P.O. Box: 1149  
Tel: (855) 23 998 777 / 430 999  
Fax: (855) 23 998 666 / 430 555  
E-mail: [acledabank@acledabank.com.kh](mailto:acledabank@acledabank.com.kh)  
Website: [www.acledabank.com.kh](http://www.acledabank.com.kh)  
SWIFT: ACLBKHPP

### ACLEDA SECURITIES PLC.

#### HEADQUARTERS

5<sup>th</sup> Floor, ACLEDA Building  
# 61, Preah Monivong Blvd., Sangkat Srah Chork,  
Khan Daun Penh, Phnom Penh, Kingdom of Cambodia.  
Tel: (855) 23 723 388 / 999 966 / 999 977  
Email: [acs.rep@acledasecurities.com.kh](mailto:acs.rep@acledasecurities.com.kh)  
Website: [www.acledasecurities.com.kh](http://www.acledasecurities.com.kh)

### ACLEDA BANK PLC.

CASH SETTLEMENT, SECURITIES REGISTRAR, SECURITIES TRANSFER, AND  
PAYING AGENT

#### HEADQUARTERS

# 61, Preah Monivong Blvd., Sangkat Srah Chork,  
Khan Daun Penh, Phnom Penh, Kingdom of Cambodia.  
P.O. Box: 1149  
Tel: (855) 23 998 777 / 430 999  
Fax: (855) 23 998 666 / 430 555  
E-mail: [acledabank@acledabank.com.kh](mailto:acledabank@acledabank.com.kh)  
Website: [www.acledabank.com.kh](http://www.acledabank.com.kh)  
SWIFT: ACLBKHPP

### ACLEDA INSTITUTE OF BUSINESS

#### HEADQUARTERS

Address: #1397, Phnom Penh-Hanoi  
Friendship Blvd., Phum Anlong Kngan, Sangkat Khmuonh, Khan  
Saensokh, Phnom Penh, Kingdom of Cambodia  
P. O. Box: 1149  
Tel: + 855 (0)23 881 790 / 999 944  
E-mail: [info@acleda-aib.edu.kh](mailto:info@acleda-aib.edu.kh)  
Website: [www.acleda-aib.edu.kh](http://www.acleda-aib.edu.kh)

### ACLEDA BANK LAO LTD.

#### HEADQUARTERS

#398, Corner of Dongpalane and Dongpaina Road, Unit 20,  
Phonesavanh  
Neua Village, Sisattanak District, Vientiane Capital, Lao PDR.  
P.O. Box: 1555  
Hotline :1800  
Tel: +856 (0)21 264 994 / 264 998  
Fax: +856 (0)21 264 995 / 219 228  
E-mail: [acledabank@acledabank.com.la](mailto:acledabank@acledabank.com.la)  
Website: [www.acledabank.com.la](http://www.acledabank.com.la)  
SWIFT: ACLBLALA

### ACLEDA MFI MYANMAR CO., LTD.

#### HEADQUARTERS

#186(B), ShweGonTaing Road, Yae Tar Shae Block,  
Bahan Township, Yangon Region,  
The Republic of the Union of Myanmar.  
Tel: (+95-1) 559 475 / 552 956  
Website: [www.acledamfi.com.mm](http://www.acledamfi.com.mm)